

gear: Bonfiglioli MVF 210 P 45 V6

motor: ABB QJ 132 M4 AT

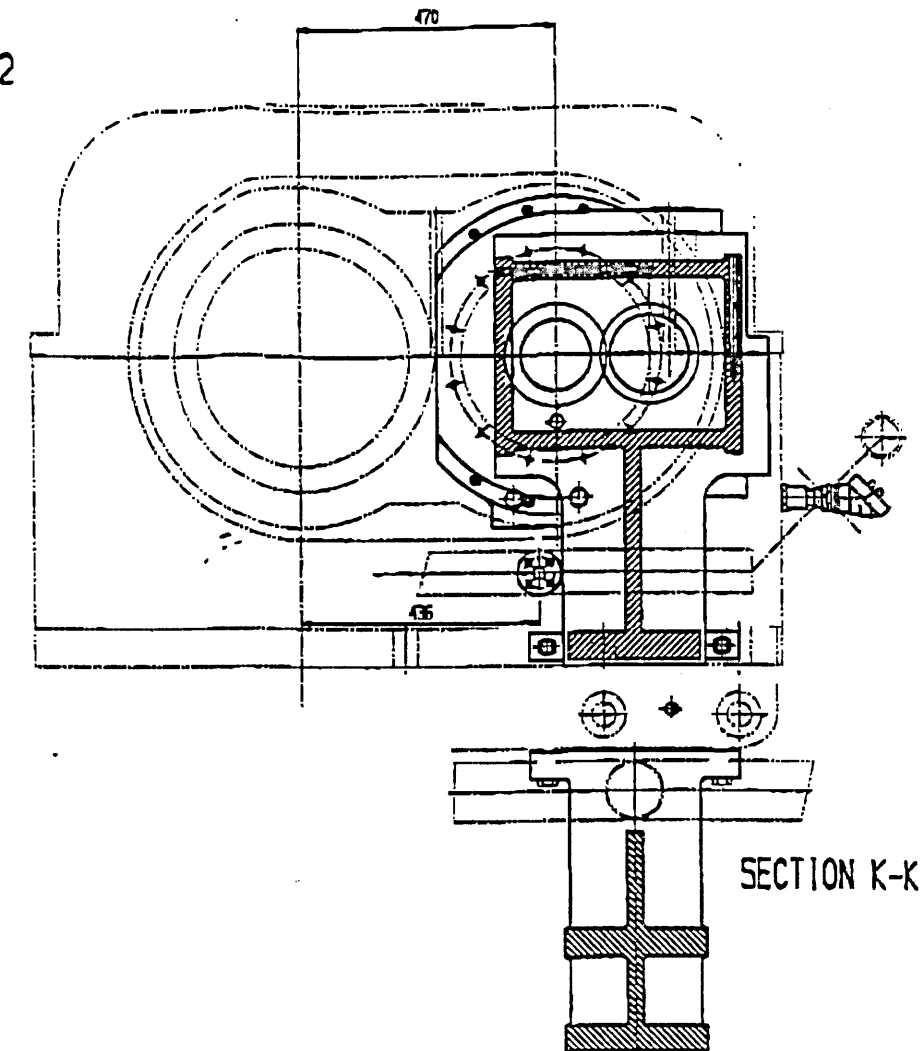
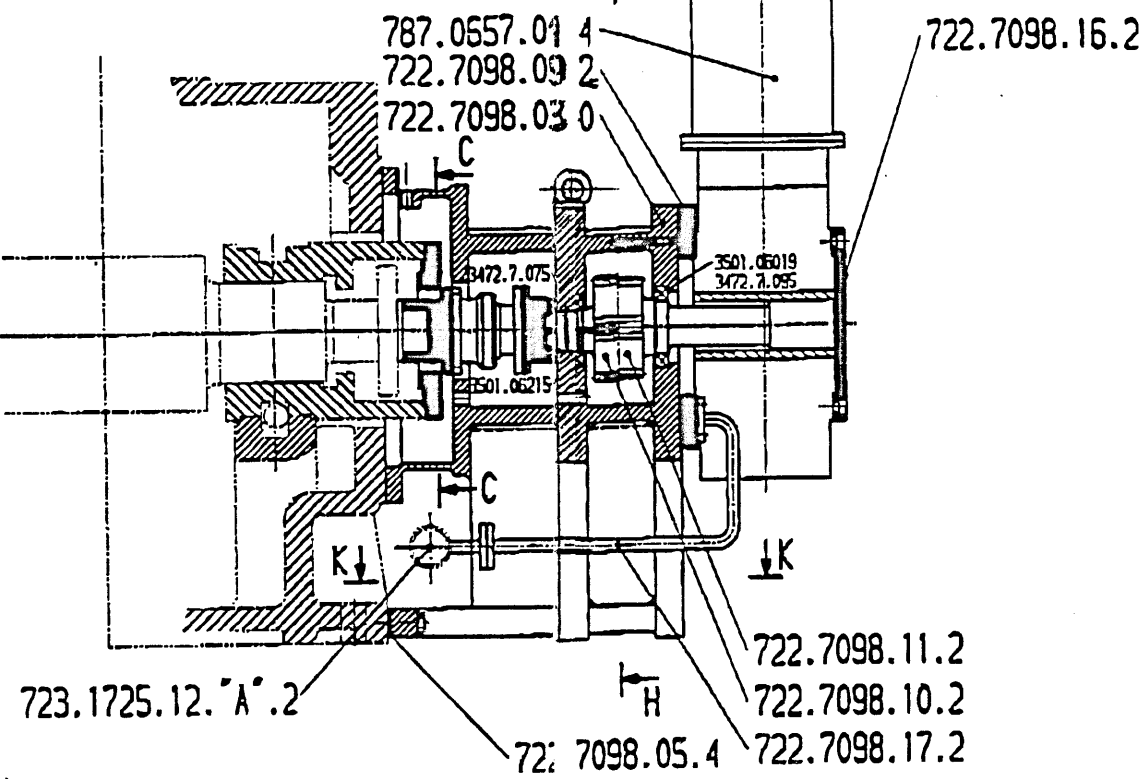
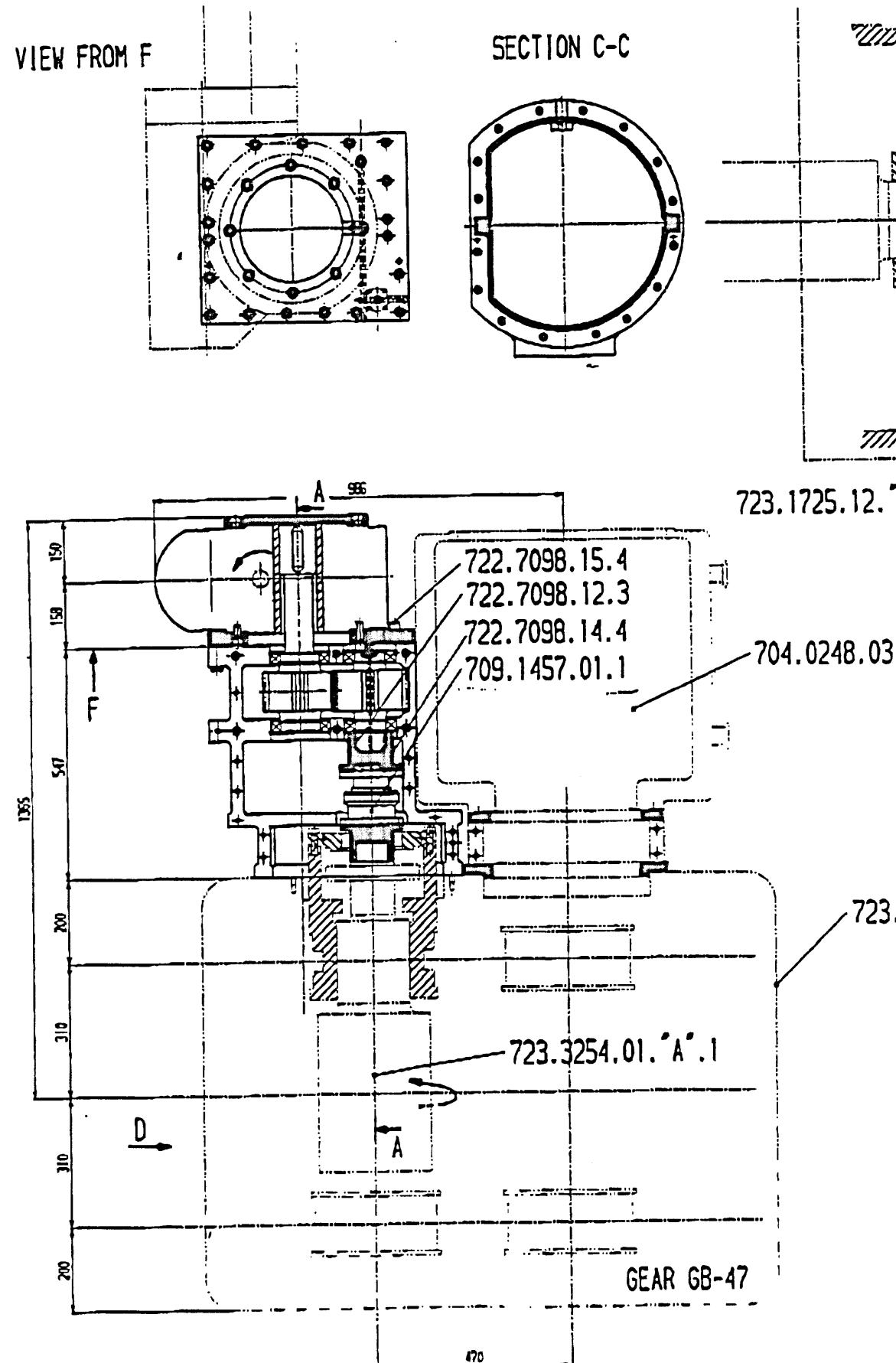
U=380V; n=1430 min-1; f=50Hz; IP 54

VIEW FROM F

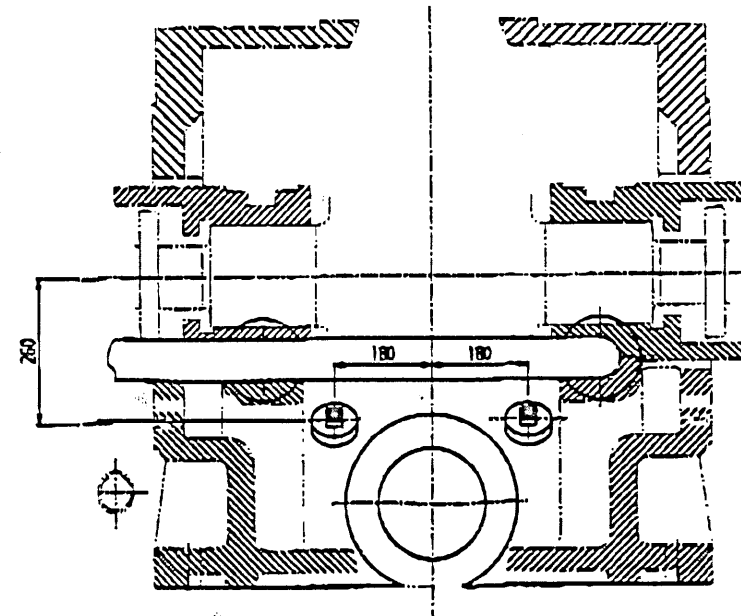
SECTION C-C

SECTION A-A

SECTION H-H



VIEW FROM D



## TECHNICAL INFORMATION

motor power : 7.5 kW  
 motor speed : 1430 min-1  
 turning speed : 31 min-1  
 gear ratio : 46.7  
 breakaway torque: 3542 Nm  
 weight : 890 kg

MAAG ITALIA  
 05.02.M.295/MAA

15. Juni 1994

5429	1:5	RDV zu GB-47
MAAG ITALIA	1:5	SECTIONAL DRAWING
722.7098.01	0	